

REGIONE EMILIA ROMAGNA
PROVINCIA REGIONALE DI PARMA

OGGETTO: LAVORI DI SISTEMAZIONE ED AMMIOBILAMENTO DELLA S.P. N.109 EX S.8. A.9.9. VERTAMARCA - VALTERRA-MANEROTTO-PARMA SIMPLICI E S.P. N.96. VERTAMARCA-MONTE ESCABO -

PROGETTO ESECUTIVO -

PROGETTISTA:
ING. GIOVANNI MARIOTTI

PROGETTO ESECUTIVO

9. CALCOLO STRUTTURALE

9.3.01 DISEGNI ESECUTIVI PARTE 9/96 - SEZIONI 128-137-143-165

VALLE

14/17

088-PPZ-1517-DEP

AD01.11.16/02/2012

DATA

14/17

088-PPZ-1517-DEP

AD01.11.16/02/2012

DATA

14/17

088-PPZ-1517-DEP

AD01.11.16/02/2012

DATA

14/17

088-PPZ-1517-DEP

AD01.11.16/02/2012

DATA

14/17

088-PPZ-1517-DEP

AD01.11.16/02/2012

DATA

14/17

088-PPZ-1517-DEP

AD01.11.16/02/2012

DATA

14/17

088-PPZ-1517-DEP

AD01.11.16/02/2012

DATA

14/17

088-PPZ-1517-DEP

AD01.11.16/02/2012

DATA

14/17

088-PPZ-1517-DEP

AD01.11.16/02/2012

DATA

14/17

088-PPZ-1517-DEP

AD01.11.16/02/2012

DATA

14/17

088-PPZ-1517-DEP

AD01.11.16/02/2012

DATA

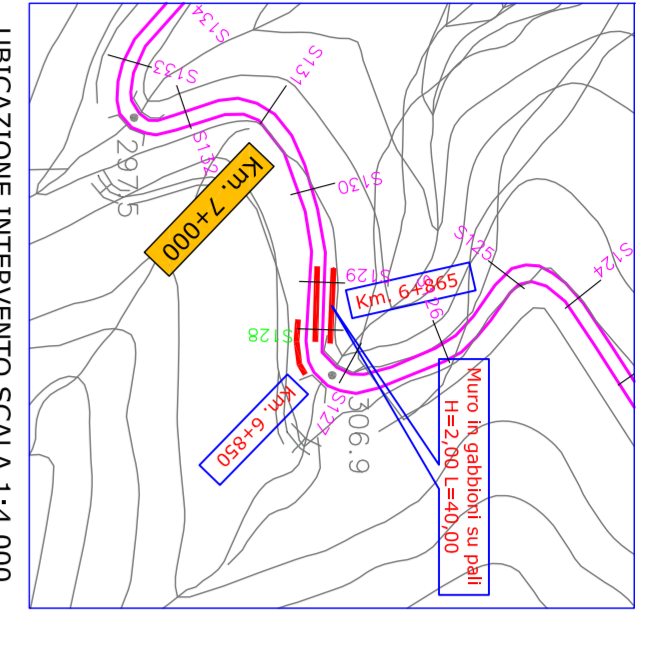
14/17

088-PPZ-1517-DEP

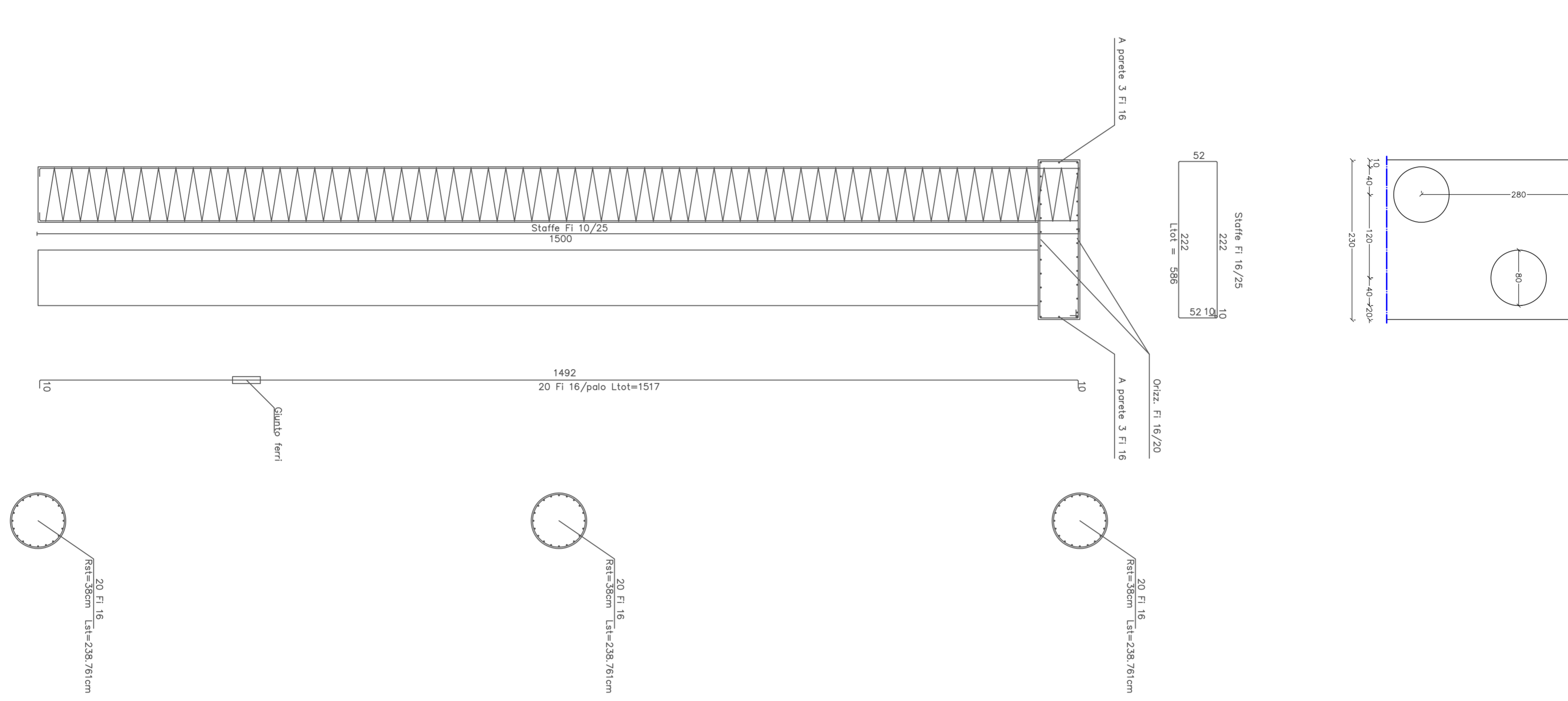
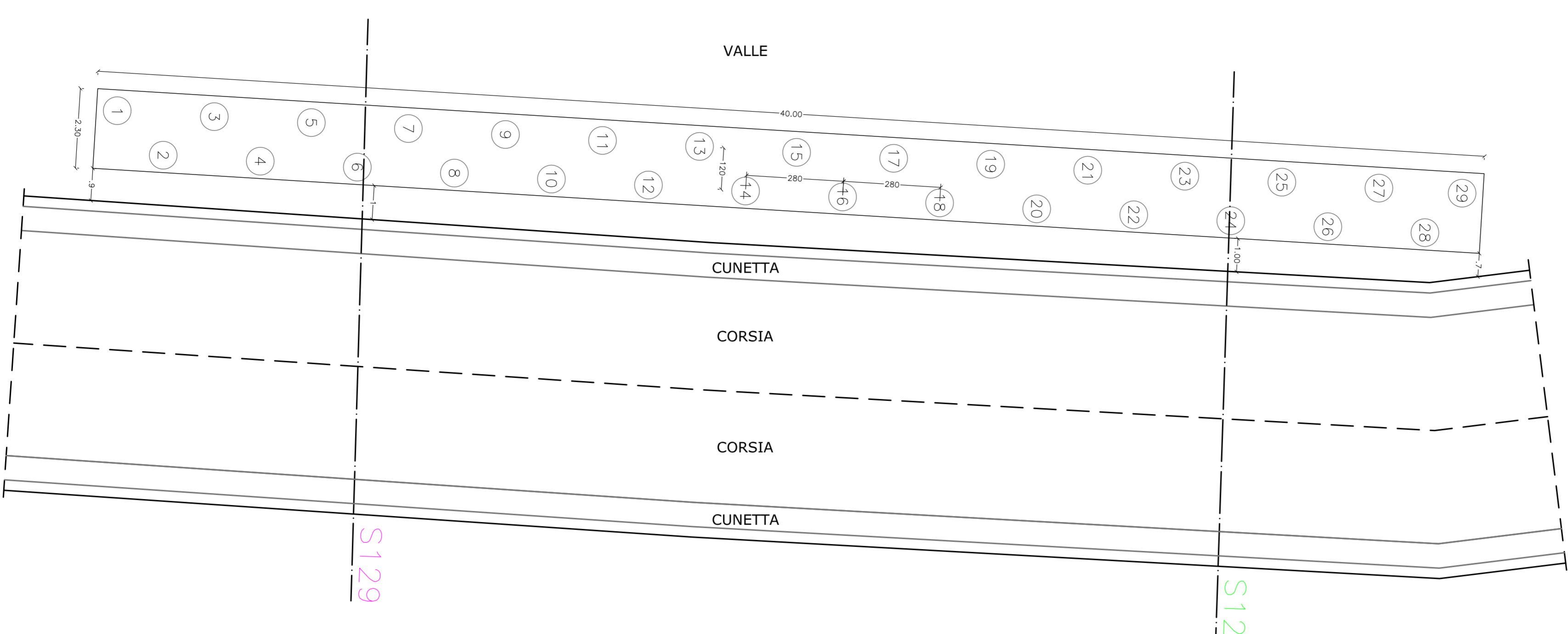
AD01.11.16/02/2012

DATA

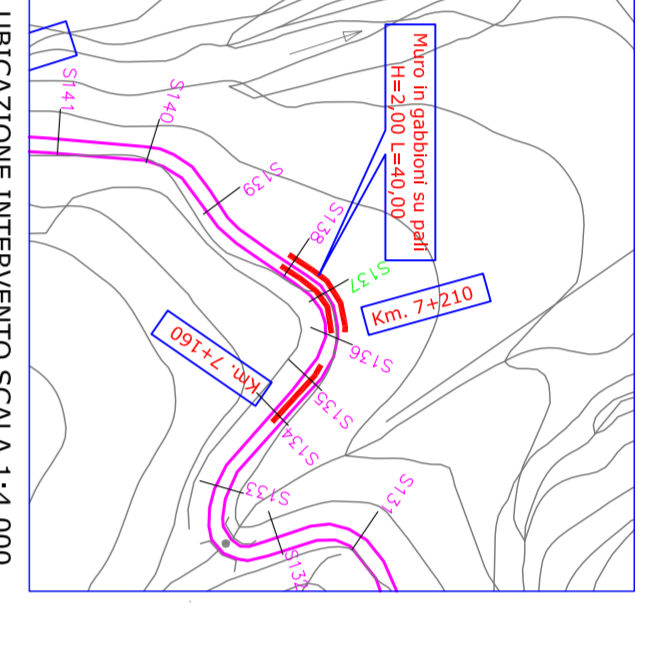
PARATIA SEZIONE 128
Prog. 6837.89



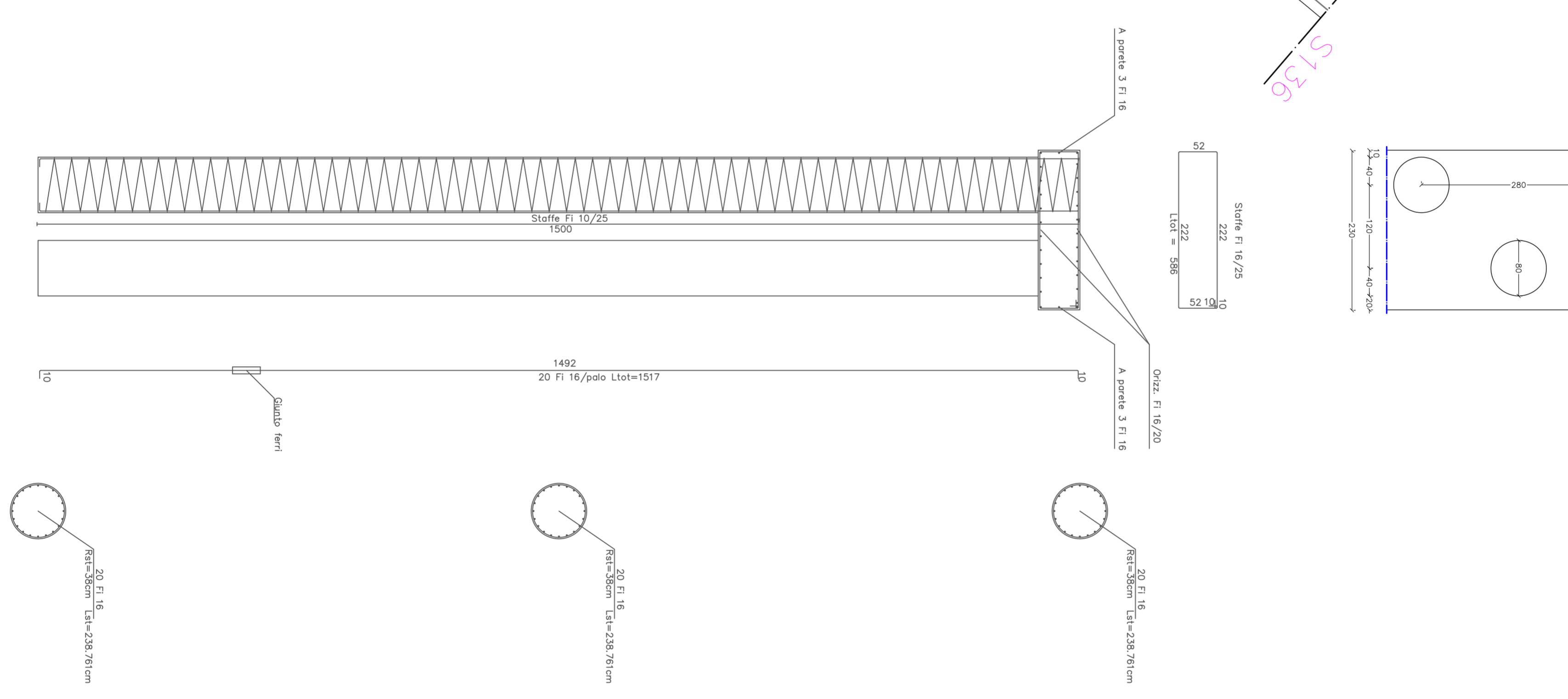
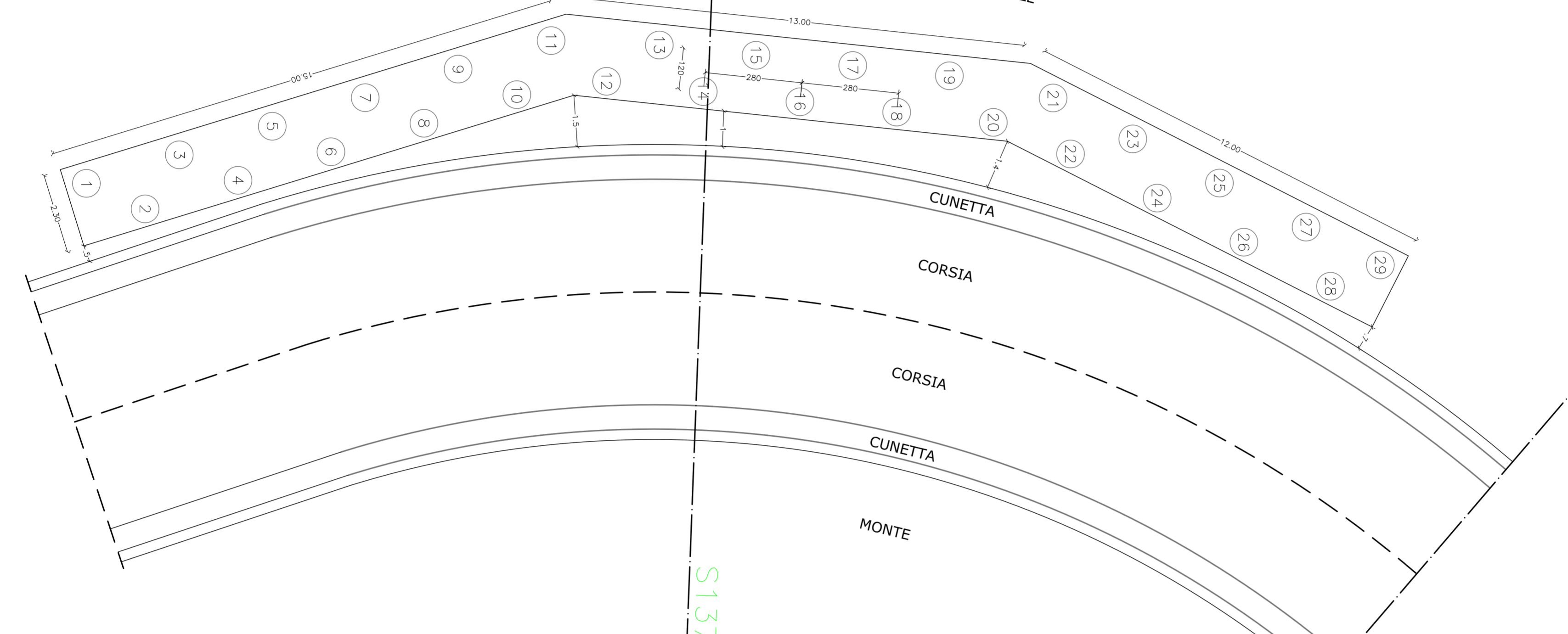
UBICAZIONE INTERVENTO SCALA 1:4.000



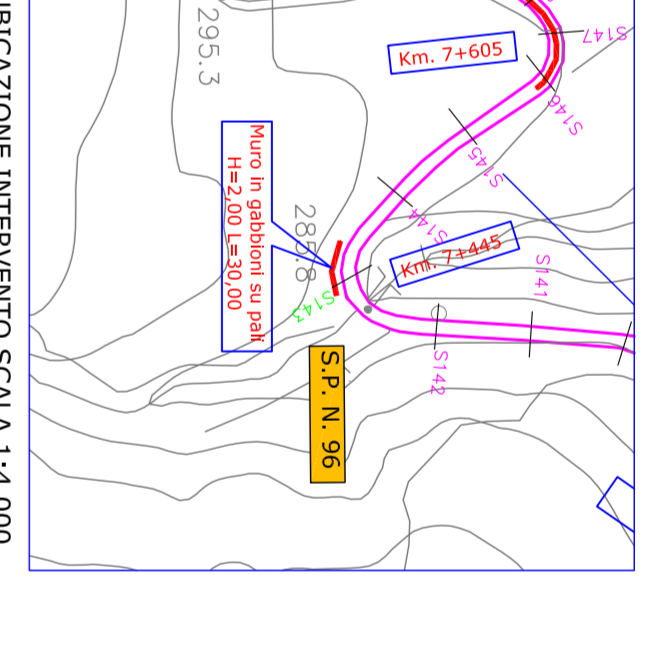
PARATIA SEZIONE 137
Prog. 7189.27



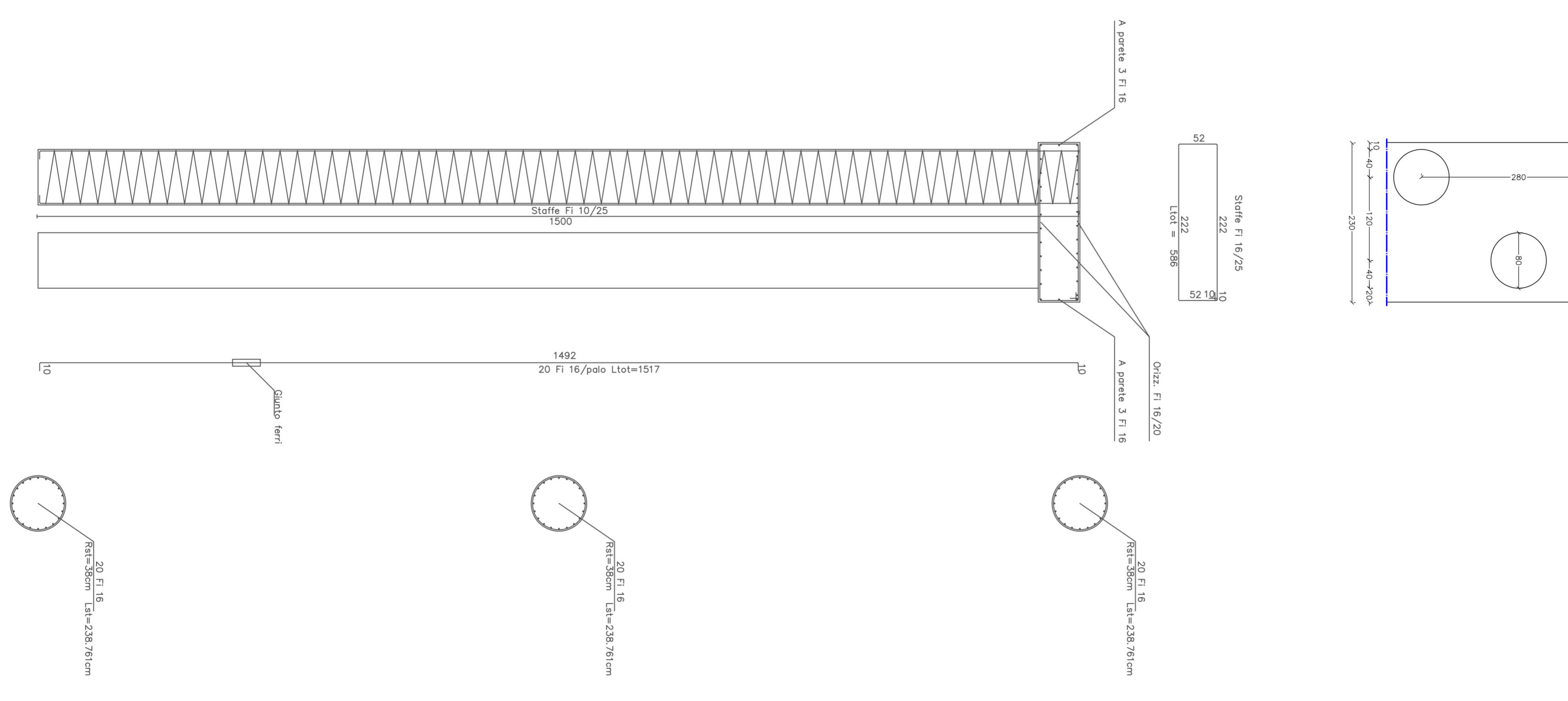
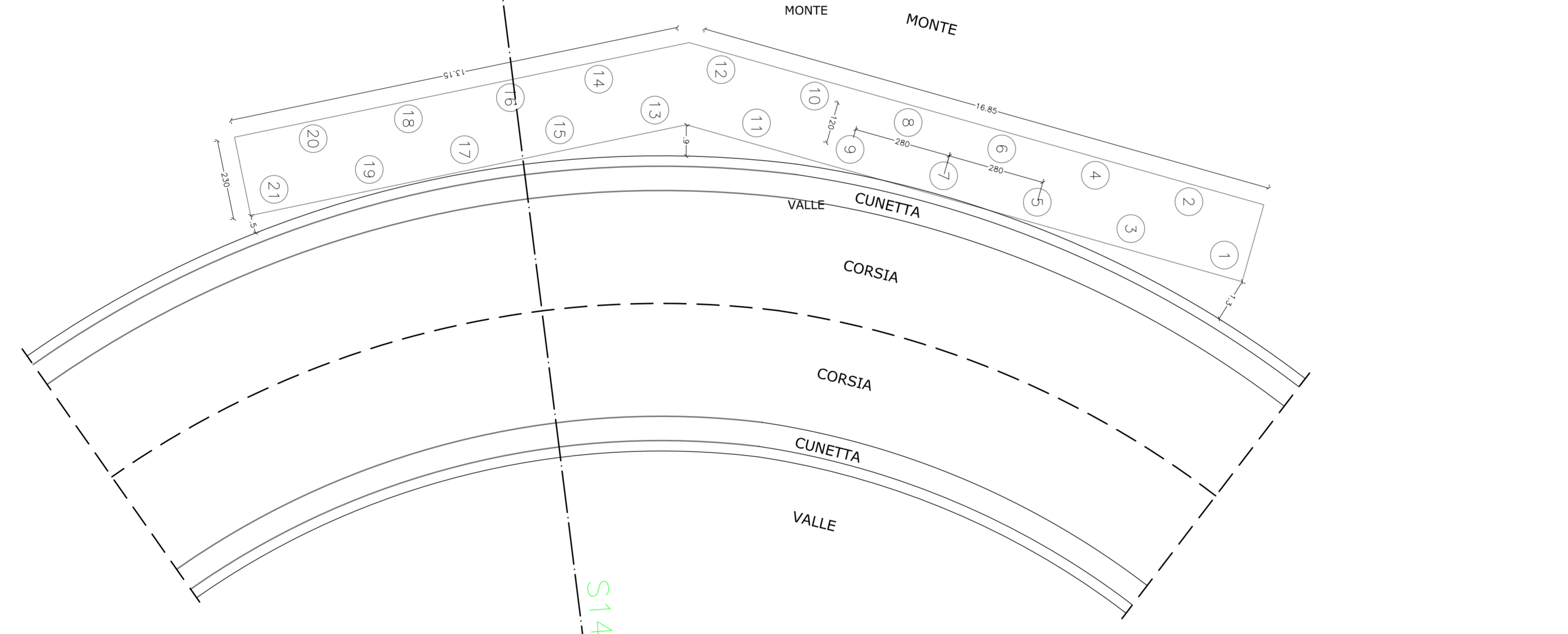
UBICAZIONE INTERVENTO SCALA 1:4.000



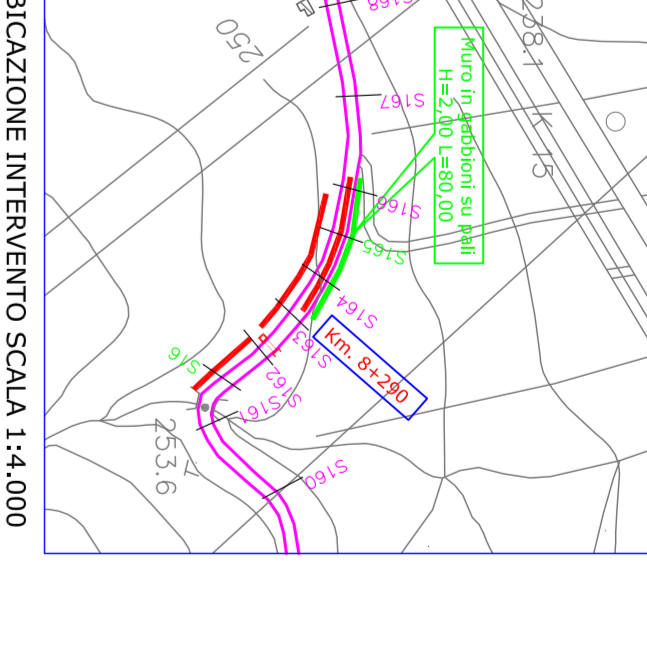
PARATIA SEZIONE 143
Prog. 7465.34



UBICAZIONE INTERVENTO SCALA 1:4.000



PARATIA SEZIONE 165
Prog. 8293.58



UBICAZIONE INTERVENTO SCALA 1:4.000

