



Libero Consorzio Comunale di Enna
(L.R. 15/2015 già Provincia Regionale di Enna)
Settore III "Territorio – Pianificazione – Ambiente

Oggetto: Lavori di manutenzione straordinaria e di
miglioramento delle condizioni di sicurezza
della S.P. n. 94.

Particolari costruttivi

Tav. 18

Progettisti:

Ing. Claudio Catania

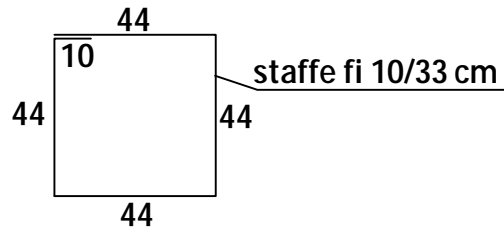
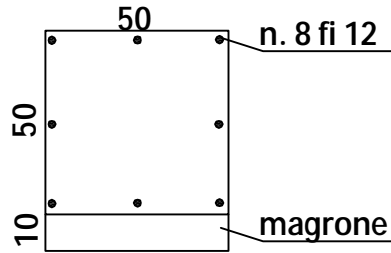
Geom. Mario Perticaro

Enna lì _____

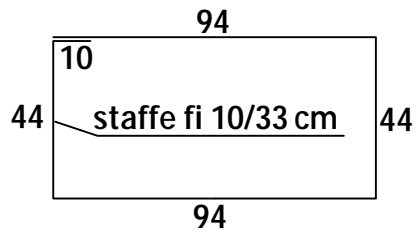
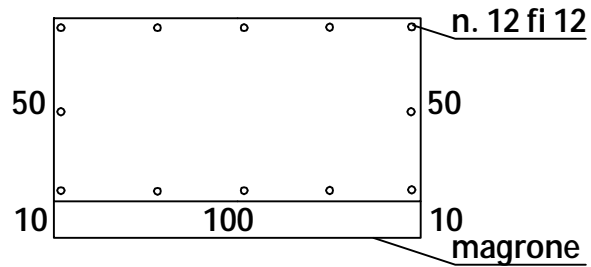
Si esprime parere favorevole di approvazione in linea tecnica
ai sensi dell'art. 5bis della L.R. 12/2011 e ss.mm.ii.,
giusto provvedimento n. _____ del _____

Il Responsabile Unico del Procedimento
Geom. Salvatore Ragonese

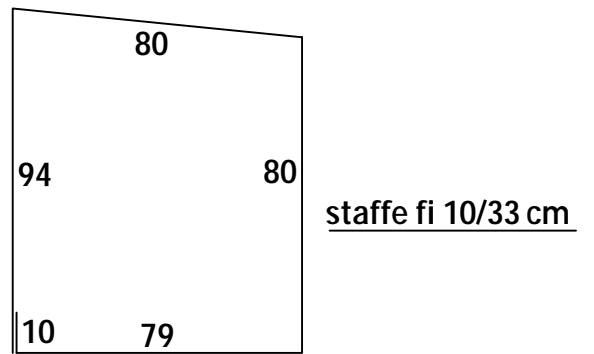
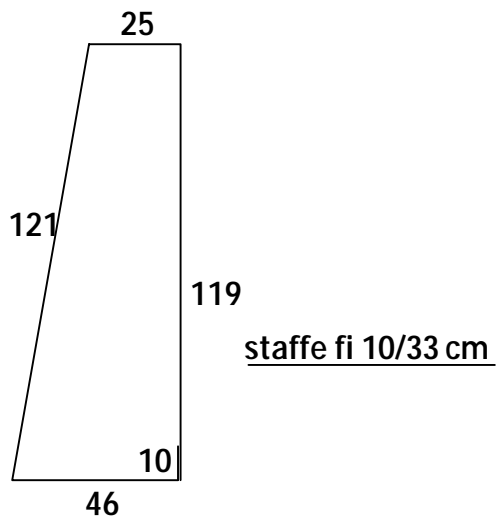
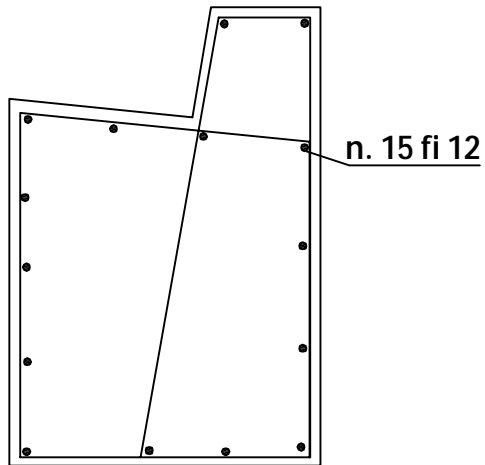
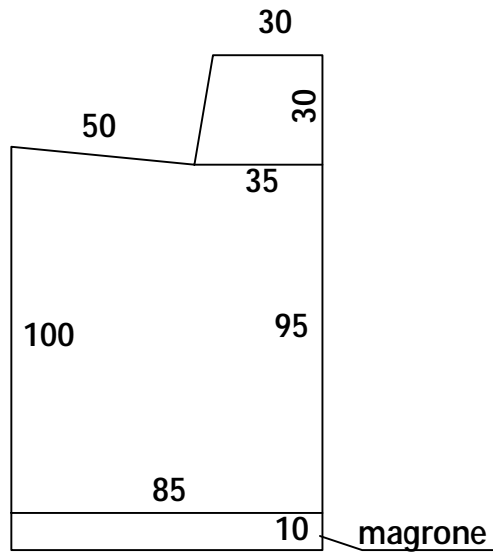
Cordolo/cunetta
lato valle - DX
kM. 2+970
nl. 140,00



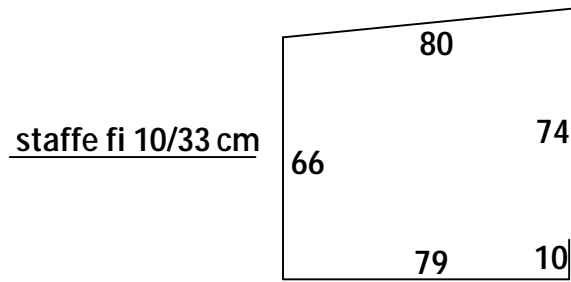
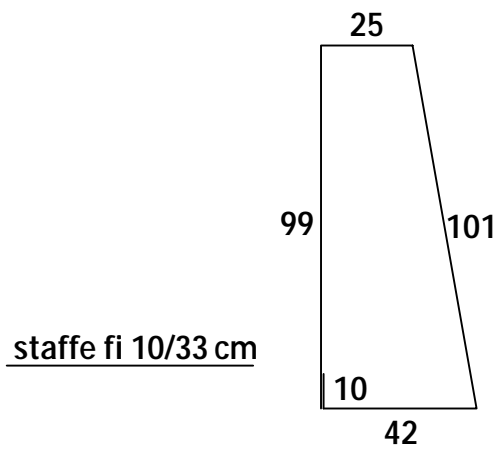
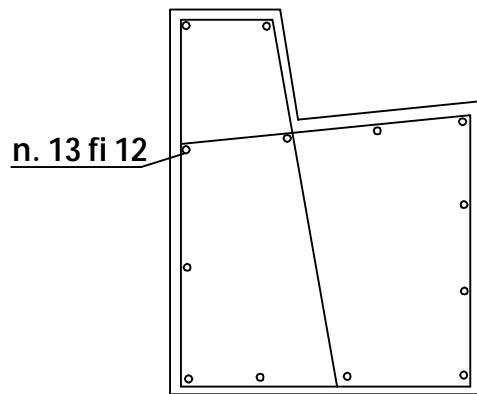
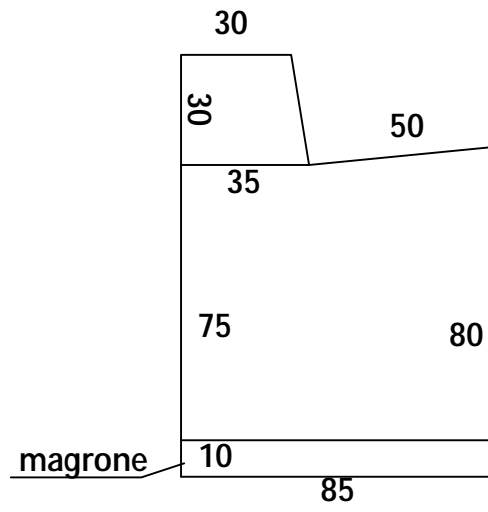
Cordolo/cunetta
lato valle - DX
kM. 2+970
nl. 24,00 (sui gabbioni)



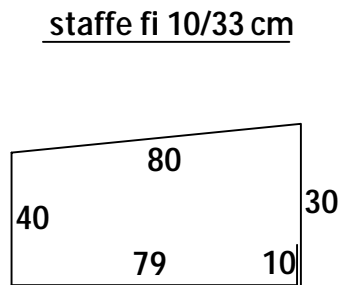
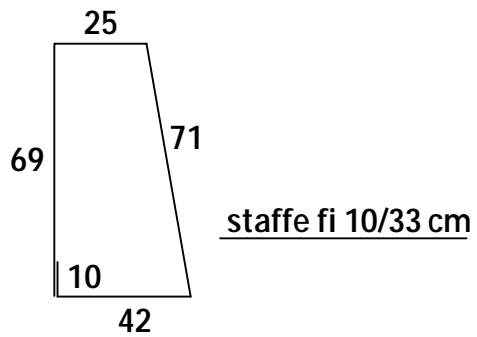
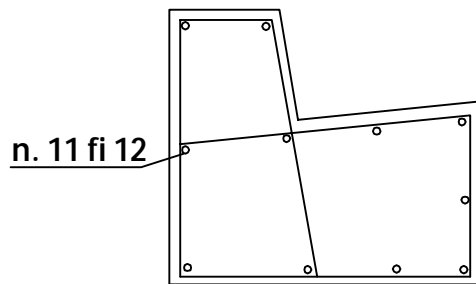
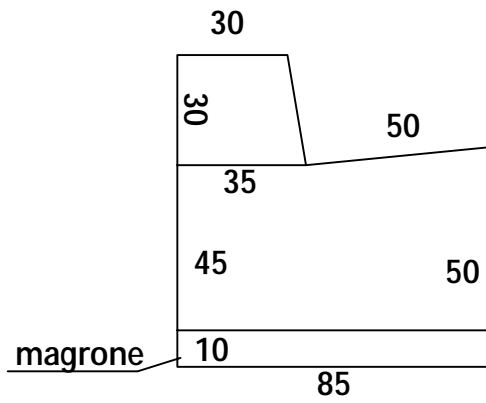
Cunetta
lato DX
Dal Km.5+278 al Km.5+354



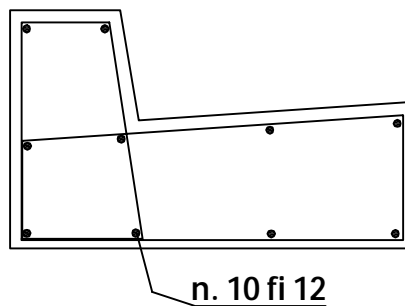
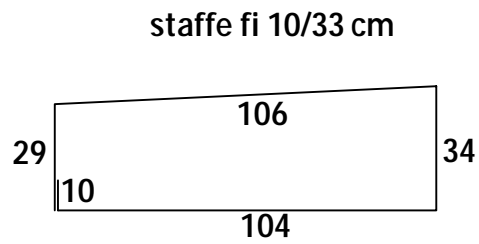
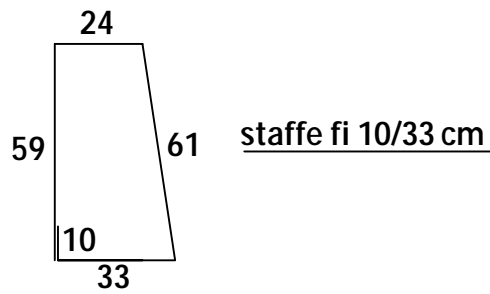
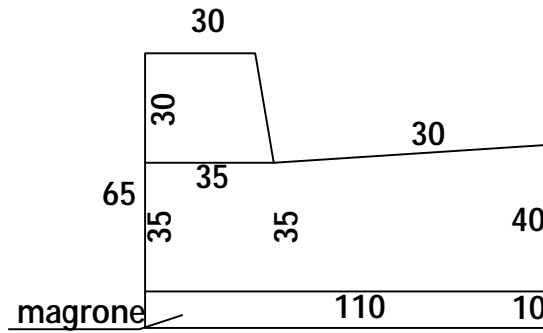
Cunetta
lato SX
Dal Km.5+224 al Km.5+380



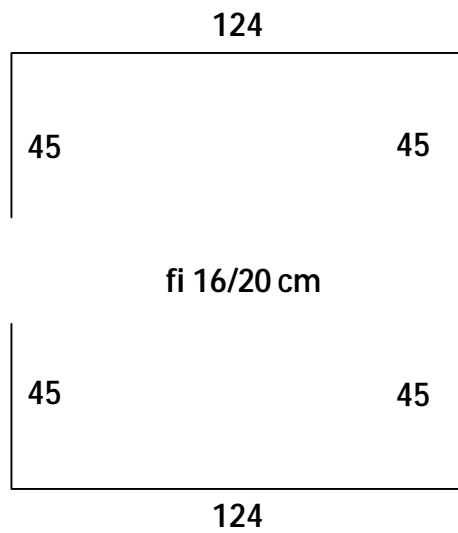
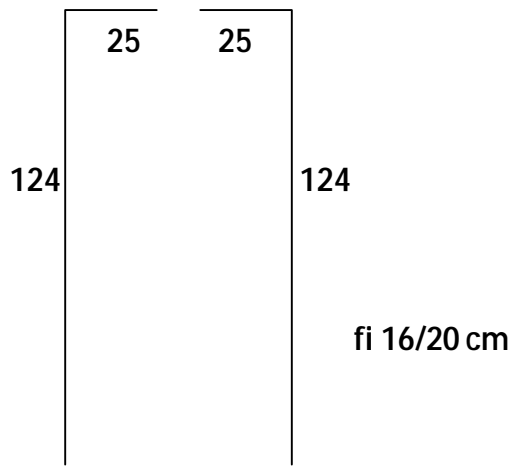
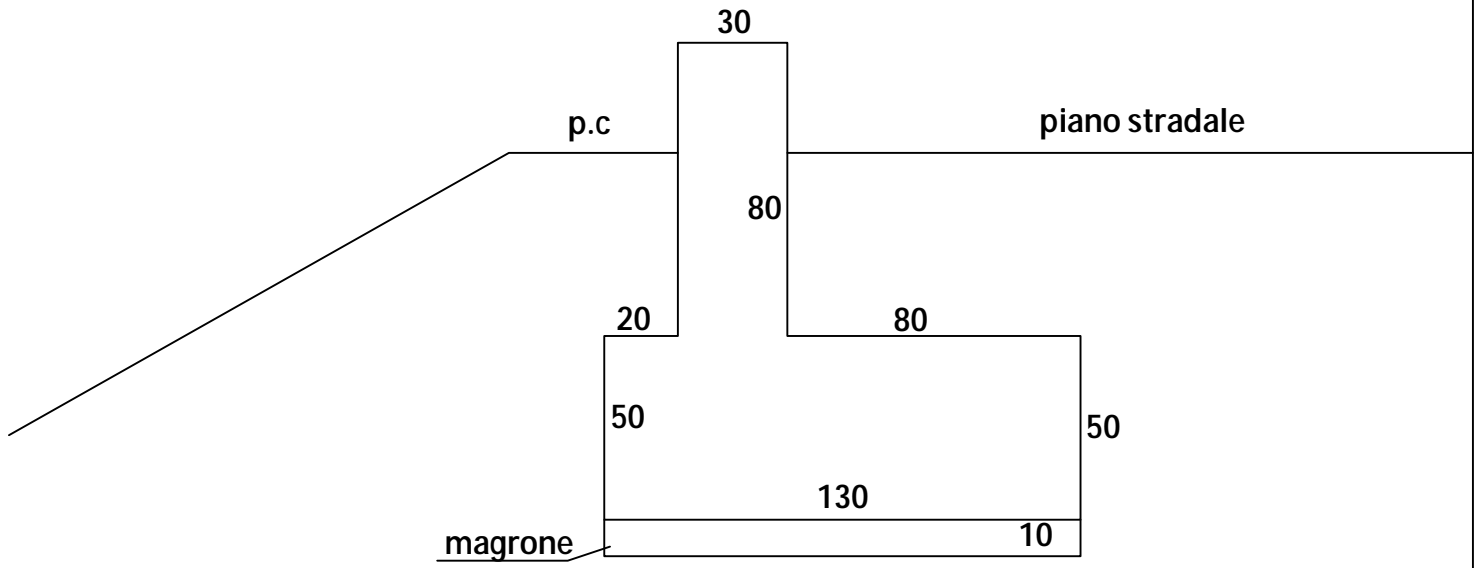
Cunetta
lato SX
Dal Km.5+380 al Km.5+470



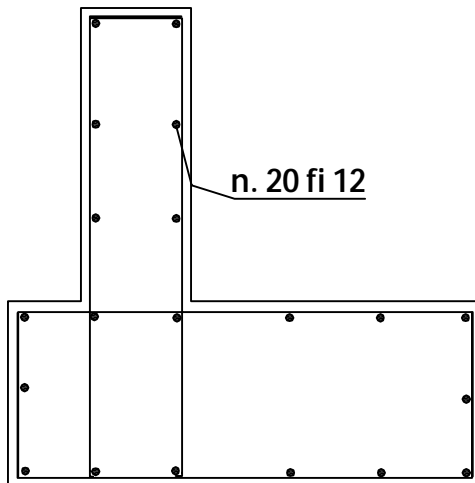
Cunetta
lato SX
Al Km. 2+970
Al Km. 4+300



Cunetta/muretto
lato SX
Al Km. 1+588

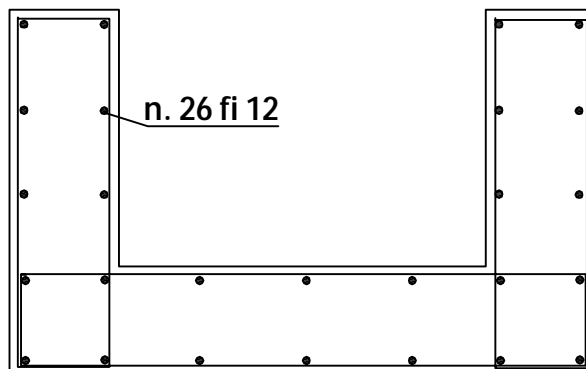
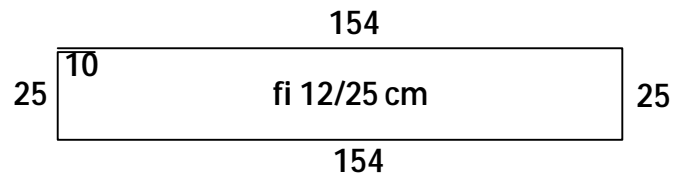
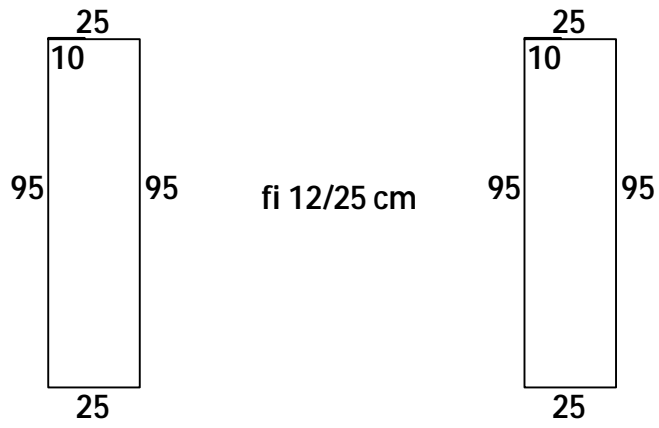
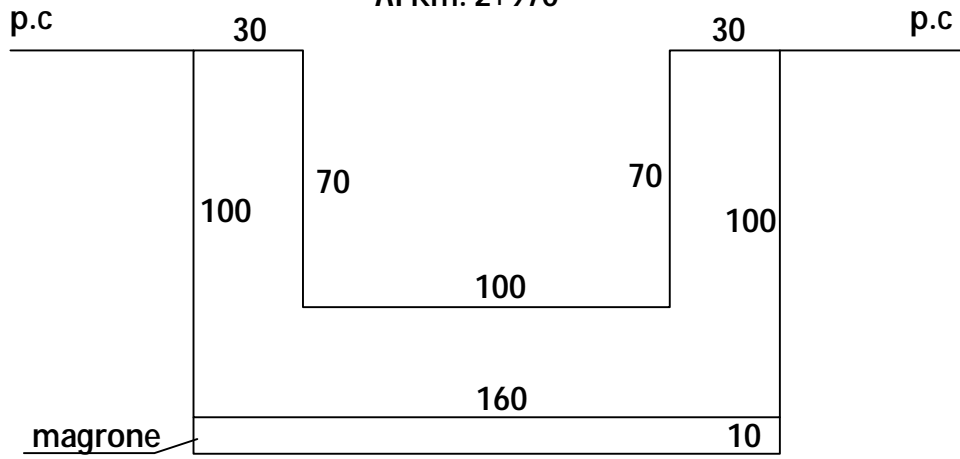


Scala 1/20



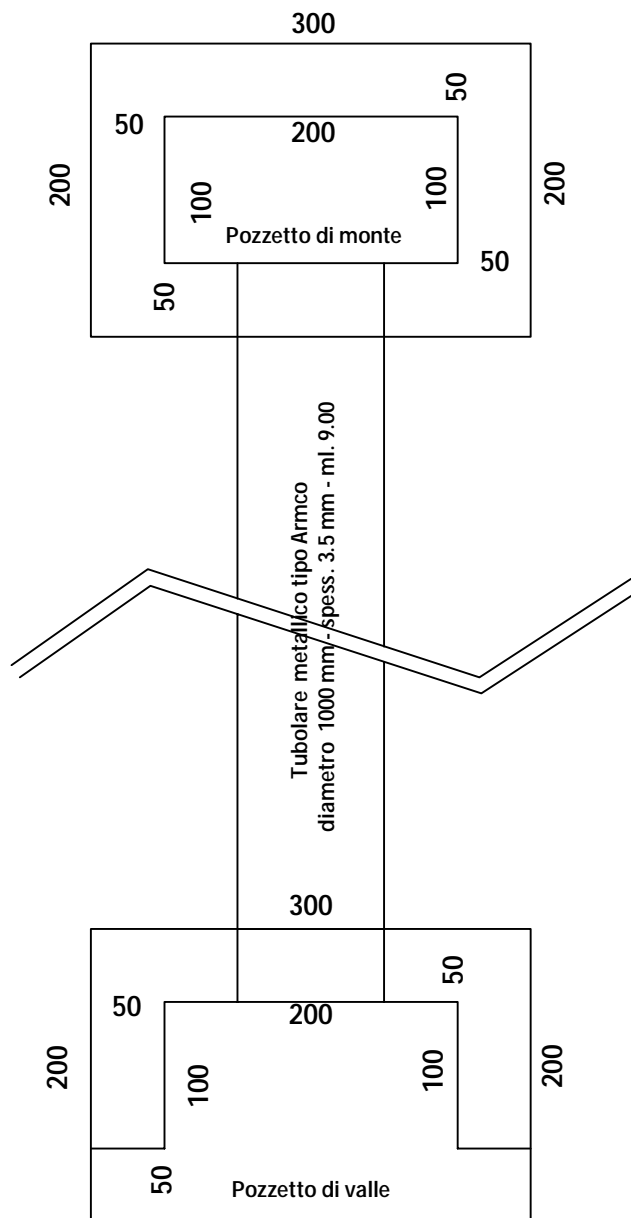
n. 20 fi 12

Cunettone
lato SX
Al Km. 2+970



Tombino Al Km. 0+500

PIANTA



SEZIONE LONGITUDINALE

