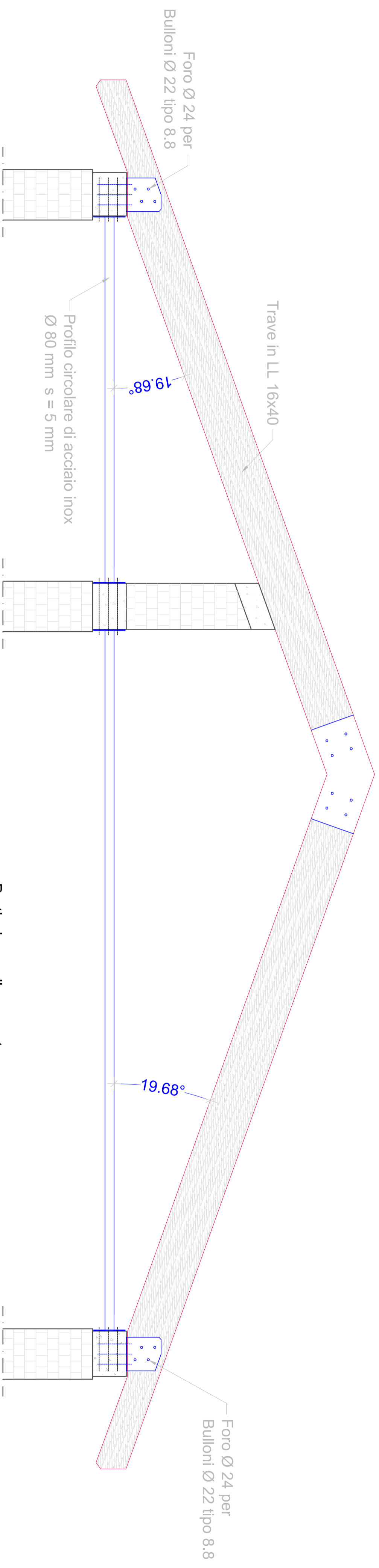
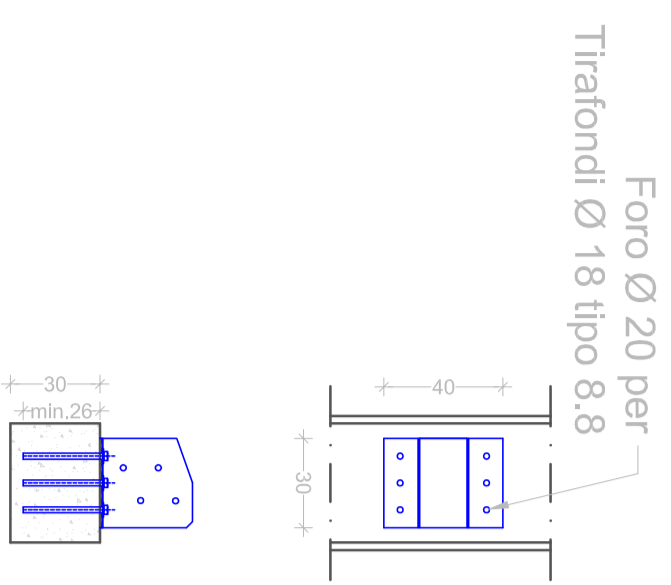


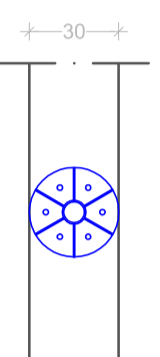
Sezione in corrispondenza della capriata



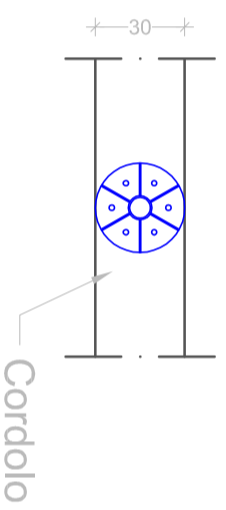
Particolare collegamento Trave - cordolo strutturale



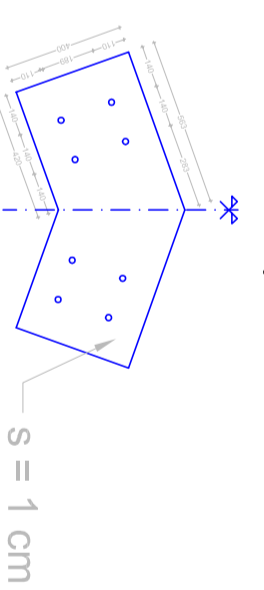
Particolare collegamento Tirante - cordolo strutturale



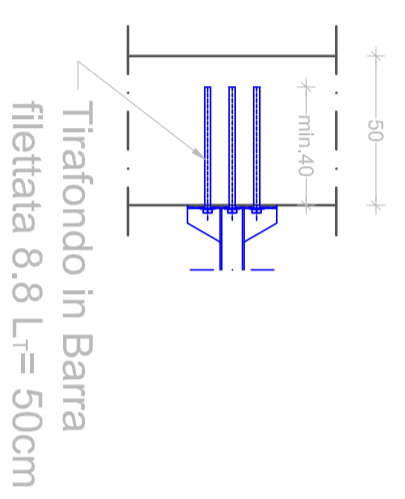
Particolare collegamento Tirante - cordolo - tirante



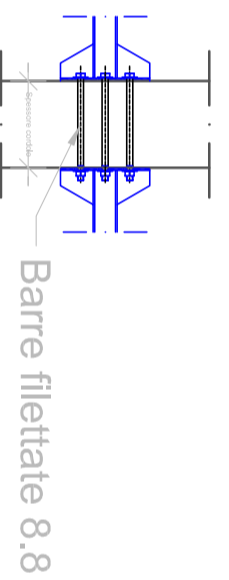
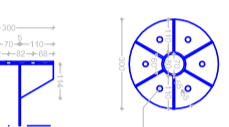
Particolare collegamento Trave capriata



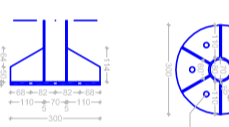
Piastra tipo Tr₅ Peso = 15,435*2 = 30,87 kg



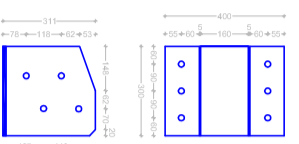
Foro Ø 18 per Bulloni Ø16 classe 8.8



Foro Ø 18 per Bulloni Ø16 classe 8.8



Piastra tipo Tr₁ Peso = 16,74 kg



Piastra tipo Tr₂ Peso = 3,07 kg

