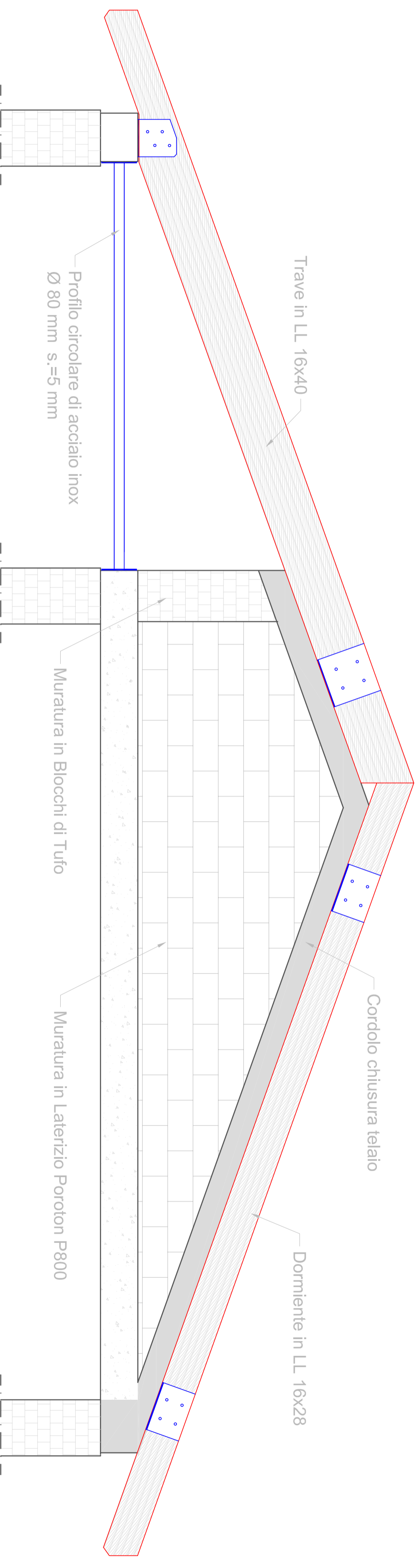
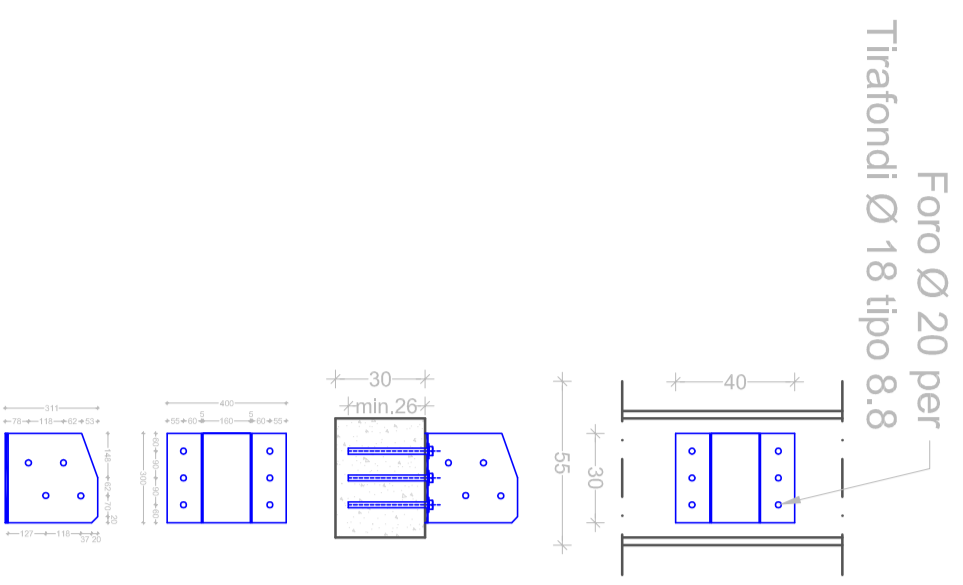


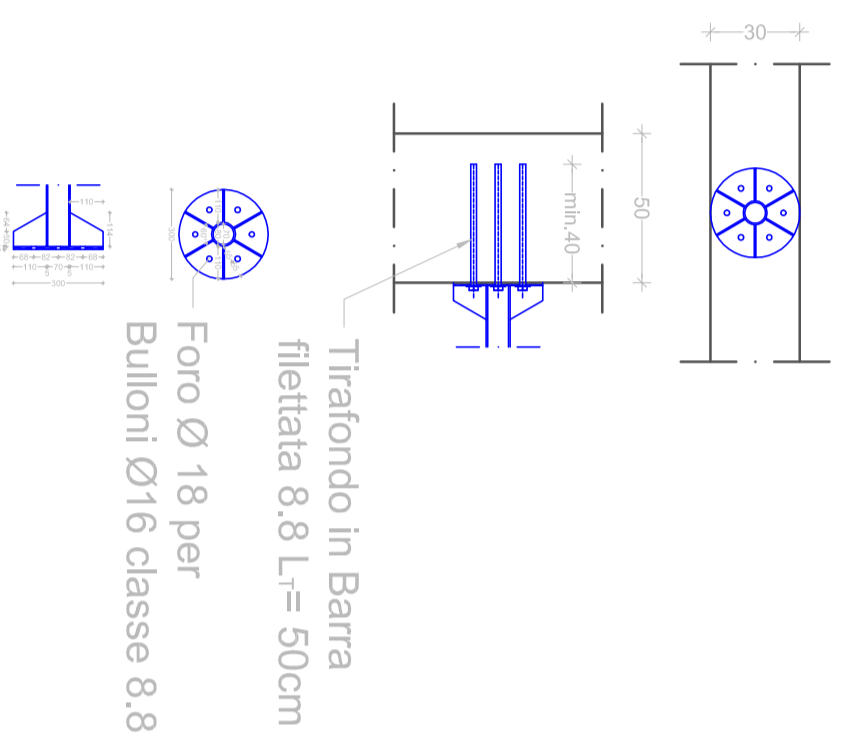
# Sezione in corrispondenza di travi e dormienti



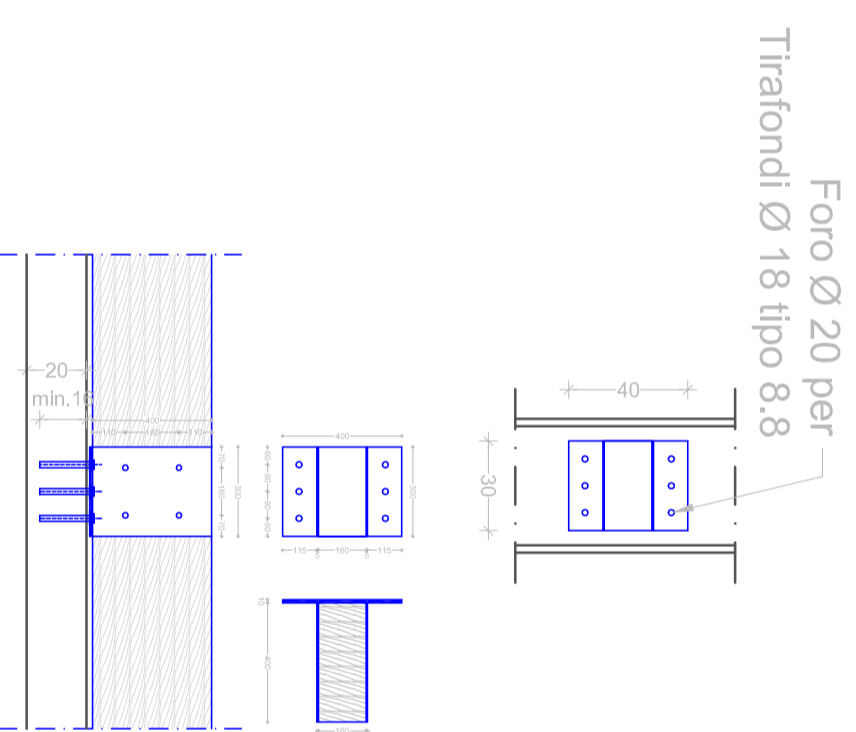
**Particolare collegamento Trave - cordolo strutturale**



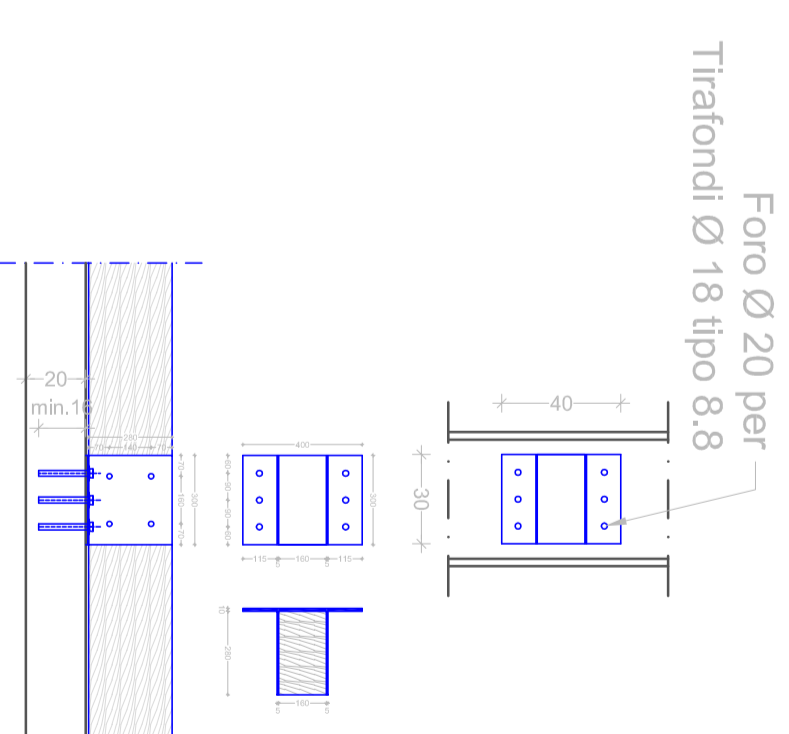
**Particolare collegamento Tirante - cordolo strutturale**



**Particolare collegamento Trave - cordolo di chiusura**



**Particolare collegamento dormiente - cordolo di chiusura**



Piastra tipo Tr<sub>1</sub> Peso = 16,74 kg

Piastra tipo Tr<sub>2</sub> Peso = 3,07 kg

Piastra tipo Tr<sub>3</sub> Peso = 18,84 kg

Piastra tipo Tr<sub>4</sub> Peso = 16,01 kg